

## Space Management

In any organization, the most valuable resource is the workforce. Enabling and empowering employees with a superior workplace is of paramount importance to the competitiveness and profitability of an organization. Workplace executives and managers are faced with this challenge while under constant pressure to reduce costs and improve customer service and, in many cases, operating with less staff and budget. Succeeding in this environment requires a new level of precision in running operations and performance analysis.

Workplace executives and managers are turning to technology to help deliver the required level of operational excellence. The solutions they have turned to are Aperture's Visual Workplace Solutions, which deliver portal-based solutions for fully automating and managing your workplace.

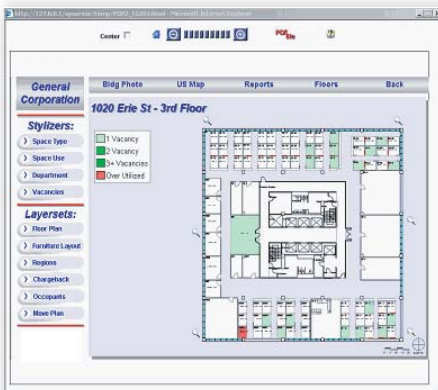
### Visually Managing Space

Delivering a superior workplace while minimizing costs and improving customer service requires optimizing space utilization, availability and forecasting. Aperture Space Management™ visually manages your organization's space in a single, central repository. It enables you to optimize your current utilization, avoiding unnecessary costs, and better forecast and meet future requirements.



*View color-coded floor plans by department to verify chargeback information.*

Aperture Space Management accurately tracks the measurement of your buildings, floors, departments, tenant's space and office space - visually organizing scaled drawings of your campuses, buildings and floors through intuitive Web navigation. It tracks all your space-related data such as gross, rentable, usable and common area, as well as, vacancy and department occupancy information in one central repository. And you can make updates to the repository of space information over the Web through intuitive forms.



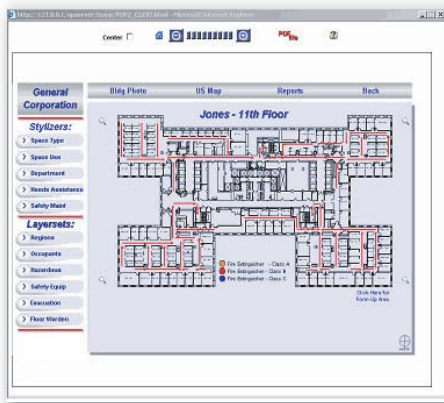
*View color-coded floor plans by vacancy to plan moves and optimize utilization*

### Application capabilities:

- Compare space utilization across multiple locations
- View color-coded floor plans by vacancy, department or space use
- Update space information over the Web
- Develop and communicate visual space proposals
- Summarize space utilization, space use, vacancies or department assignment by floor or building
- Track safety equipment and hazardous materials
- Develop business continuity plans
- Communicate evacuation routes on scaled diagrams
- Track gross, rentable, usable and common area
- Track conference rooms and training rooms
- Generate accurate chargeback reports
- Manage space to BOMA standards

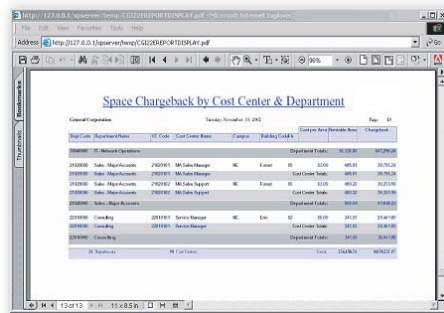
## Develop Space Proposals and Business Continuity Plans

With Aperture Space Management, you can determine exactly what space you have and how you are using it. This enables you to plan for future expansion or consolidation. You can develop visual proposals, which can be communicated over the Web for approval. In addition, visually tracking your space is the foundation for business continuity plans - documenting evacuation routes and tracking safety equipment and hazards.



*Develop business continuity plans, which can be viewed over your Intranet*

Aperture Space Management enables you to generate accurate chargeback reports, which can be communicated over the Web. You can provide business managers access to these reports with a single click of the mouse through an intuitive, personalized Web portal. In addition, you can quickly and accurately analyze your space utilization and vacancies, benchmark key metrics across floors or buildings, plan for future space requirements and perform stacking analysis, all contributing to reducing overall real estate costs.



*Department managers can quickly and easily generate chargeback reports over the Web*

With Aperture Space Management you can ensure that you are providing a superior workplace while minimizing costs and improving customer service - resulting in better value for your organization.

Aperture's Visual Workplace Solutions help organizations:

- Reduce Cost by Effectively Managing Space
- Improve Operations by Delivering Key Information
- Provide Better Service while Reducing Cost

## About Aperture

Aperture is a global provider of enterprise software solutions that empower organizations to strategically manage their business infrastructure. Our solutions enable companies to increase operational efficiency and make better business decisions. Through advanced visualization and work-process technology, our solutions and services help organizations optimize their business infrastructure.

**Corporate Headquarters**  
9 Riverbend Drive South  
PO Box 4906  
Stamford, CT 06907

tel 203.357.0800  
toll-free 800.346.6828  
fax 203.357.0809

[www.aperture.com](http://www.aperture.com)